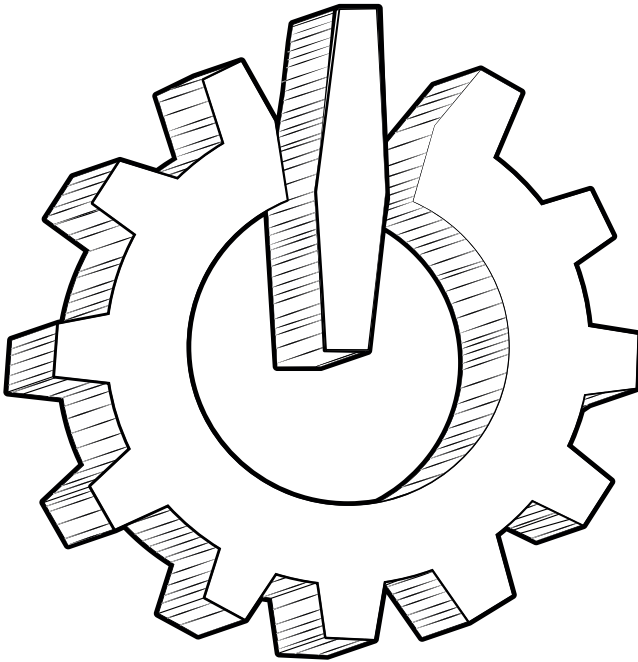


BRUSSELS 2 FEBRUARY - 3 FEBRUARY

# FOSDEM<sup>19</sup>.org



(em)powering the world  
free and open source software

8000+ hackers • 600+ lectures • lightning talks • devrooms • beer

# WELCOME TO THE 19TH EDITION OF FOSDEM



## INFODESK

In this booklet, you will find useful information about the conference and the venue. If you have any questions, the volunteers at the infodesks will be happy to help you. The main infodesk is located in building K. A secondary infodesk can be found in building H. Staff and volunteers also roam around the campus and can be recognised by their bright yellow and orange T-shirts. There is a handy map on the back of this booklet, pointing out the locations of all buildings, rooms, and the infodesks. They can also be found on [nav.fosdem.org](http://nav.fosdem.org).

## TABLE OF CONTENTS

05	General information
07	Getting around
09	Developer rooms
10	Stands
11-16	Floor plans
17-21	Sponsors
23	Surroundings

## FIRST AID

A Red Cross first aid team is present during the weekend. This team is located behind the large auditorium on the second level of the K building.

**In an emergency, you can phone  
the infodesk on +32 2 788 74 74**

## FRINGE EVENTS

The FOSDEM Fringe consists of independent events involving free and open source software taking place in the days around the FOSDEM weekend. They are organised independently of FOSDEM.

The list of events can be found on the FOSDEM web site at [fosdem.org/2019/fringe](http://fosdem.org/2019/fringe)

## CODE OF CONDUCT

In order to keep FOSDEM a fun, interesting and positive experience for everybody, we expect participants to follow our guidelines: FOSDEM aims to be a free, open and cooperative event.

This means we expect collaboration from all the FOSDEM participants, and for everybody to behave respectfully towards all others, including those that are different or think differently from themselves.

Please be helpful, considerate, friendly, and respectful towards all other participants and respect the environment. We don't condone harassment or offensive behaviour at our conference. We consider it against our values as human beings.

We're voicing our strong, unequivocal support of exemplary behaviour by all participants. Please remember that all FOSDEM participants are here by invitation of the conference organisers and the ULB.

We expect all participants to follow this Code of Conduct during the conference and related events. This includes conference-related social events at off-site locations, and in related online communities and on social media. Participants asked to stop a particular behaviour by staff are expected to comply immediately. Conference participants violating this Code of Conduct may be expelled from the conference and/or banned from formal participation in future events.

**Please bring any concerns to the immediate attention of our coordinating team, by phone**

**+32 2 788 74 73 or email [conduct@fosdem.org](mailto:conduct@fosdem.org)**

**Thank you for your help in making FOSDEM a success and pleasant for all the people involved.**

## VOLUNTEERS SOUGHT

FOSDEM is a conference entirely made by volunteers. While a small crew works on it year-round, most of the work during the conference is done by a large, enthusiastic group of great people who donate their time to make FOSDEM happen - you. And this year is no different - we need your help. Please spare an hour or two to help introduce speakers, run the cloakroom and infodesks or clean up after the event, etc. Just walk up to one of the Infodesks and say you would like to volunteer, we will take care of you.

# DONATIONS

FOSDEM is free to attend. The event is organised by volunteers and funded entirely by sponsors, the sale of T-shirts, and individual donations.

In order to keep the event free, we kindly ask you to buy a T-shirt and/ or to make a donation at one of the infodesks. Your donation supports FOSDEM 2019 and future editions. Depending on the amount you donate, you will receive one or more of the following along with our gratitude:

T-shirts are available in **male sizes**:  
S, M, L, XL, XXL, XXXL.

In **female sizes**:  
S, M, L, XL, XXL, XXXL.

It is not possible to get a refund for any reason.  
Donations are not tax-deductible.



	EUR 25,00	EUR 50,00		EUR 100,00
FOSDEM T-shirt				
FOSDEM Hoodie				
O'Reilly pocket book				
O'Reilly book				

# GENERAL INFORMATION


## NETWORK


Best-effort wireless network coverage is available everywhere on campus. To encourage you to support IPv6 in your applications our main “FOSDEM” ESSID does not support IPv4 natively. There are transition measures in place to reach IPv4-only hosts over IPv6 (DNS64 and NAT64). If you cannot live without native legacy IP connectivity for some reason, you can use the dual-stack “FOSDEM-legacy” ESSID. Please consider fixing your application or service, though.

All rooms except for **AW1.121**, **AW1.125**, **UA2.114 (Baudoux)**, **UA2.118 (Henriot)** and **UA2.220 (Guillissen)** are accessible to wheelchair users. There are ramps and lifts.

At [nav.fosdem.org](http://nav.fosdem.org), you will find our on-campus route planner. It has an option for avoiding stairs. All routes calculated with this option set should be wheelchair and limited mobility accessible.

## ONLINE SCHEDULE

 The full conference schedule is available on our website: [fosdem.org/schedule/](http://fosdem.org/schedule/)

 There are third-party applications for just about every smartphone operating system. Check your respective app store/market or see the list at [fosdem.org/schedule/mobile/](http://fosdem.org/schedule/mobile/)

## ACCESSIBILITY

While we don’t own the university campus and have little control over its accessibility, we have tried to find ways for developers with physical limitations to make the most of the event.

The accessible routes and the location of the lifts are not always obvious, but FOSDEM staff and volunteers will be happy to show you around. We reserve a limited number of seats at the front of both main track rooms for developers with hearing or visual impairments. We cannot make advance reservations in every developer room, but accommodations can usually be made on the spot. More information can be found at [fosdem.org/2019/practical/accessibility/](http://fosdem.org/2019/practical/accessibility/)

### LOST ON CAMPUS?

Try our wayfinder at  
[nav.fosdem.org](http://nav.fosdem.org)

## CLOAKROOM

Do you want to get rid of heavy bags, or are you tired of carrying your coat or umbrella around with you? Store them free of charge at our staffed cloakroom during the event. Simply follow the signs in the K building.

## LOST PROPERTY

Lost one of your precious belongings? Found something that looks like someone lost it? Please go to the infodesk in the K building for assistance.

## CATERING

There are three places on the campus where you can get food and/or drinks (see the map at the back for the exact locations). The cafeteria in the F building (between K and U) has comfortable seating and serves espresso, breakfast, sandwiches, beer and drinks during the event.

The food court has catering vans offering hot food including vegan food, fries, burgers, hot dogs, pasta, sandwiches, vegetarian wrap and waffles. Most vendors accept cash as well as cards. The catering vans will be located on the square between the F and U buildings. Seating is available in the cafeteria in the F building nearby. The second bar is located under Janson and offers sandwiches, drinks and loads of beer. Please try to stay quiet while in there. People in Janson can hear you. In the area surrounding the campus there are many other shops and restaurants where you can get food. **See the surroundings map on page 23-24.**

## CASH POINTS

There is a cash point on the campus, just past the main bar near the food stands, but experience shows that it runs out of cash quickly during FOSDEM. An alternative cash point can be found at 466, Chaussée de Boondael.

To get there, leave the campus towards where the buses and trams stop, and continue straight ahead until the third roundabout and turn left there. You will find the cash point on the left side of the street.

## DO US A FAVOUR...

### GARBAGE & GLASS

Please try to keep the campus clean! Throw your garbage into the bins. If you see a full bin, please let staff, volunteers, or infodesk know.

Glass bottles should be put in the boxes located near some bins or in the designated container near the lower level of the H building. If you see people scavenging bottles, please report them to security, staff, volunteers, or infodesk immediately.

### CLEANUP

After FOSDEM is over, we will need to clean up, and quickly. We would greatly appreciate your help. This can be as simple as helping stands carry their equipment, grabbing a broom and cleaning the floors, or lend a hand collecting all of FOSDEM's gear. Simply talk to staff, volunteers, or infodesk.

# GETTING AROUND

## MEETING PEOPLE AND DOING THINGS

### PUBLIC TRANSPORT

The following STIB/MIVB routes call at “ULB”

- **Bus 71 De Brouckère – Delta**
- **Bus 72 ADEPS – ULB**
- **Tram 25 Rogier – Boondael Gare**
- **Tram 94 Louise – Roodebeek**

See the back cover for a map.

**Warning!** Due to roadworks, some stops on line 71 are not being served. More information can be found on the website of the Brussels Intercommunal Transport Company at [www.stib-mivb.be](http://www.stib-mivb.be).

### TAXI

If you need a taxi, we suggest calling Taxi Verts on +32 2 349 49 49. The address of the venue is:

**ULB Campus Solbosch**  
**50, Av. Franklin D. Roosevelt**  
**1050 Bruxelles**

The location where taxis expect to pick you up is marked on the map on the back cover.

### FREE SHUTTLE BUSES

On Sunday afternoon, FOSDEM provides a free shuttle bus service from the conference venue to Brussels South (Midi) railway station which has a regular service to many popular destinations within Belgium and to surrounding countries.

Five buses will run at roughly 20-minute intervals from Av. Franklin D. Roosevelt (lower side of the campus). The journey takes approximately 20 minutes. Based on previous experience, we expect the buses to be busiest from 17:30 on. The first bus leaves at 15:30. The last departure will be at 19:30. If you don't want to queue, why not leave later? There are plenty of bars in the neighbourhood where you can pass the time!

### KEYSIGNING

The keysigning will take place on Sunday at 14:00 in the corridor on the second level of the U building. Only people who registered for this event in advance can participate. Please bring the printed and verified list, a pen, and appropriate form of identification with you to FOSDEM. Be on time! Please be sure to complete your signing homework before Tuesday, 30 April 2019, and upload new signatures on your keys to a well-connected keyserver.

### BOF ROOMS

Small and cosy rooms intended for ad-hoc discussions, meet-ups, or brainstorming sessions. Each seats approximately thirty people. There is deliberately no projector or recording equipment. Reservations are made on a first-come, first-served basis. Signup sheets are available at the infodesk in building H. Directions to the rooms can also be obtained there.

## HACKER ROOM

Need a break? Want to spend some quiet time coding? Need to recharge yourself and/or your devices? There is a hacker room where you can sit back and do all that. The hacker room is H.2111 in the upper H building.

## ANNOUNCEMENT CORNER

This is the place to be for all sorts of announcements, including adverts and leaflets of software releases, community projects, and so on. Adverts may not be placed anywhere else on campus! Handing out flyers is likewise not allowed. In the “job corner” section, information on employment or contracting opportunities can be found. The corner is in the upper H building. Some common sense rules apply. Everything must be related to FOSS. If in doubt, ask a member of staff.

### FEEDBACK

How are we doing? Are you enjoying this edition of FOSDEM?  
Is there anything we can do to make future events better?

Please take a minute to fill in our feedback form on page 22.



# DEVELOPER ROOMS

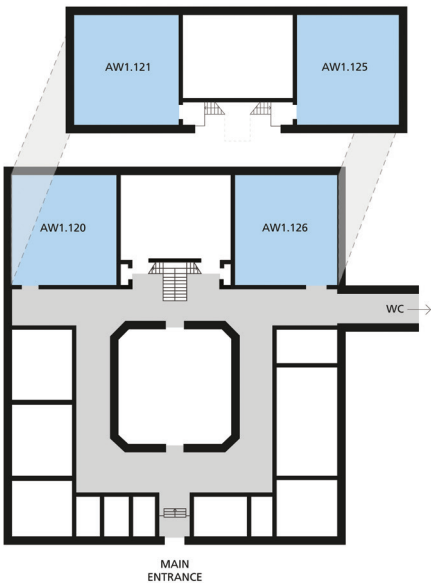
Developer rooms are assigned to self-organising groups to work together on open source projects, to discuss topics relevant to a broader subset of the community, etc. See [nav.fosdem.org](http://nav.fosdem.org) on how to get to them.

Saturday		Sunday	
Project	Room	Project	Room
Ada	AW1.125	Blockchain	H.1302
BSD	K.3.401	CAD and Open Hardware	AW1.125
Decentralized Internet & Privacy	UD2.218A	Community	H.1301
Free Java	H.1302	Containers	UA2.114
Go	UD2.120	DNS	K.4.601
Graph Processing	H.1308	Distributions	K.3.401
Graphics	K.4.401	Free Software Radio	AW1.120
Infra Management	UB2.252A	Free Tools and Editors	UD2.119
Sat Legal	UA2.220	Geospatial	AW1.126
Minimalistic Languages	K.4.201	HPC, Big Data, and Data Science	UA2.118
Mozilla	UD2.208	Hardware Enablement	K.4.401
MySQL, MariaDB & Friends	H.1301	Javascript	H.1308
.NET and TypeScript	K.3.201	LLVM	K.4.201
Sat Open Document Editors	UA2.114	Machine Learning on Code	H.2213
Open Media	H.1309	Microkernels and Component-based OS	AW1.121
Open Source Design	AW1.120	Monitoring & Observability	UB2.252A
Quantum Computing	AW1.121	PostgreSQL	UA2.220
RISC-V	AW1.126	Python	UD2.120
Retrocomputing / PHP & Friends	K.4.601	Real Time Communications	H.1309
Software Defined Networking	H.2214	Rust	UD2.208
Tool the Docs / Collaborative information and content management applications	UD2.119	Search	K.3.201
Virtualization and IaaS	H.2213	Security	UD2.218A
		Software Defined Storage	H.2214

# STANDS

Building AW	Building K - level 1	Building K - level 2
coreboot, flashrom, LinuxBoot	<b>Group A</b>	0 A.D.
Espruino, MicroPython	CentOS	App Inventor
GRUB Project	Fedora Project	DashboardHub
Ham Radio	FreeBSD Project	Eclipse Foundation
Linaro	Gentoo	Emitter
OpenEmbedded	GNOME	GitLab
PINE64 Community	illumos	Godot Engine
ProjectACRN	KDE	Google Summer of Code
<b>Building H</b>	LFS	JavaScript
Bareos	LibreOffice	Matrix.org
Grafana	NextCloud	MySQL
Mender.io	openSUSE Project	Open Source Test Case Management
openHAB	<b>Group B</b>	Percona
OpenLDAP	Bazel	Perl Programming Languages
Turris	Debian	PostGraphile
WolfSSL	Haiku	PostgreSQL
	Kopano	Python
	Mozilla	Schul-frei and Teckids e.V.
	ownCloud	SOFA Open Source Physics Engine
	The Apache Software Foundation	The Realtime Lounge
	XWiki, Cryptpad	VideoLAN
	<b>Group C</b>	
	Ceph, Gluster	
	FOSSASIA	
	FSF, FSFE	
	IsardVDI	
	Linux Professional Institute (LPI)	
	Open Source Design	
	Open Source Initiative	
	OpenStack, RDO Community	
	oVirt, Foreman	
	Software Freedom Conservancy	

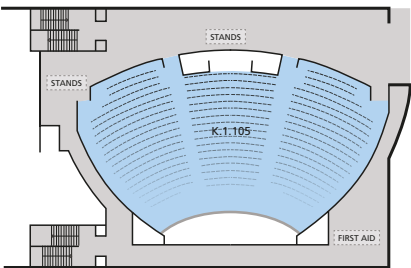
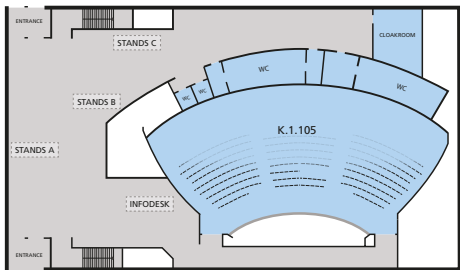
# BUILDING AW



Developer rooms: <b>Saturday</b>		Developer rooms: <b>Sunday</b>	
Project	Room	Project	Room
Open Source Design	AW1.120	Free Software Radio	AW1.120
Quantum Computing	AW1.121	Microkernels and Component-based OS	AW1.121
Ada	AW1.125	CAD and Open Hardware	AW1.125
RISC-V	AW1.126	Geospatial	AW1.126

Stands	
coreboot, flashrom, LinuxBoot	OpenEmbedded
Espruino, MicroPython	PINE64 Community
GRUB Project	ProjectACRN
Ham Radio	
Linaro	

# BUILDING K - LEVEL 1 & 2

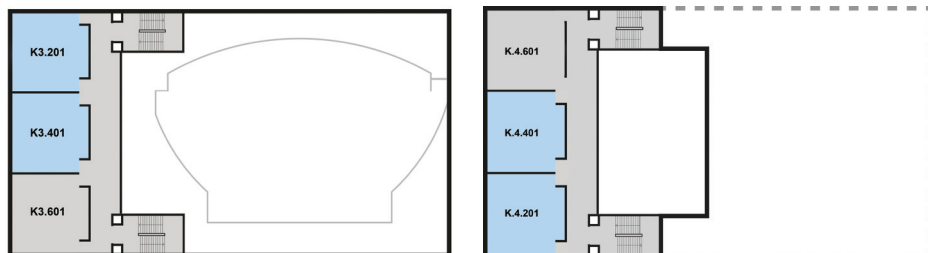


Main tracks: <b>Saturday</b>	Main tracks: <b>Sunday</b>
<b>Level 1</b>	<b>Level 2</b>
Databases	Hardware
Storage	Miscellaneous
	Performance

Stands		
Group A	Group B	Group C
CentOS	Bazel	Ceph, Gluster
illumos	Debian	FOSSASIA
Fedora Projectz	Haiku	FSF, FSFE
FreeBSD Project	Kopano	IsardVDI
Gentoo	Mozilla	Linux Professional Institute (LPI)
GNOME	ownCloud	Open Source Design
KDE	The Apache Software Foundation	Open Source Initiative
LFS	XWiki, Cryptpad	OpenStack, RDO Community
LibreOffice		oVirt, Foreman
NextCloud		Software Freedom Conservancy
openSUSE Project		

# BUILDING K - LEVEL 2, 3 & 4

The stands are on level 2 of K building



Developer rooms: <b>Saturday</b>		Developer rooms: <b>Sunday</b>	
Project	Room	Project	Room
.NET and TypeScript	K.3.201	Search	K.3.201
BSD	K.3.401	Distributions	K.3.401
Minimalistic Languages	K.4.201	LLVM	K.4.201
Graphics	K.4.401	Hardware Enablement	K.4.401
Retrocomputing / PHP & Friends	K.4.601	DNS	K.4.601

Stands		
0 A.D.	Google Summer of Code	PostGraphile
App Inventor	JavaScript	PostgreSQL
DashboardHub	Matrix.org	Python
Eclipse Foundation	MySQL	Schul-frei and Teckids e.V.
Emitter	Open Source Test Case Management	SOFA Open Source Physics Engine
GitLab	Percona	The Realtime Lounge
Godot Engine	Perl Programming Languages	VideoLAN

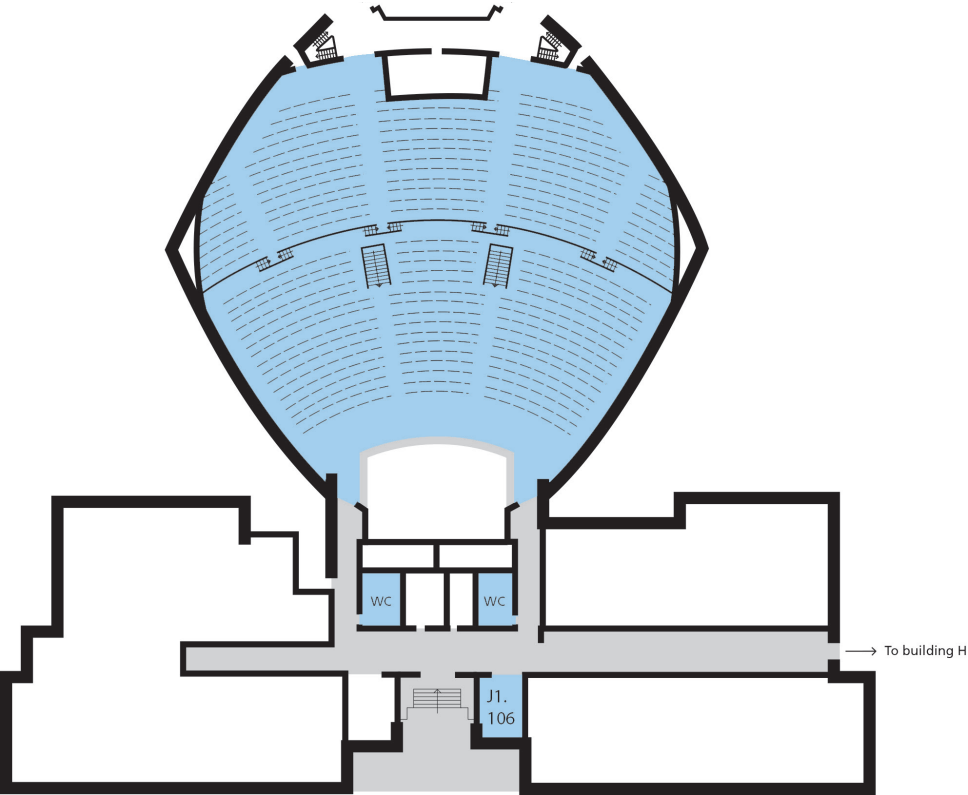
# BUILDING H



Developer rooms: <b>Saturday</b>		Developer rooms: <b>Sunday</b>	
Project	Room	Project	Room
MySQL, MariaDB & Friends	H.1301	Community	H.1301
Free Java	H.1302	Blockchain	H.1302
Graph Processing	H.1308	Javascript	H.1308
Open Media	H.1309	Real Time Communications	H.1309
Virtualization and IaaS	H.2213	Machine Learning on Code	H.2213
Software Defined Networking	H.2214	Software Defined Storage	H.2214

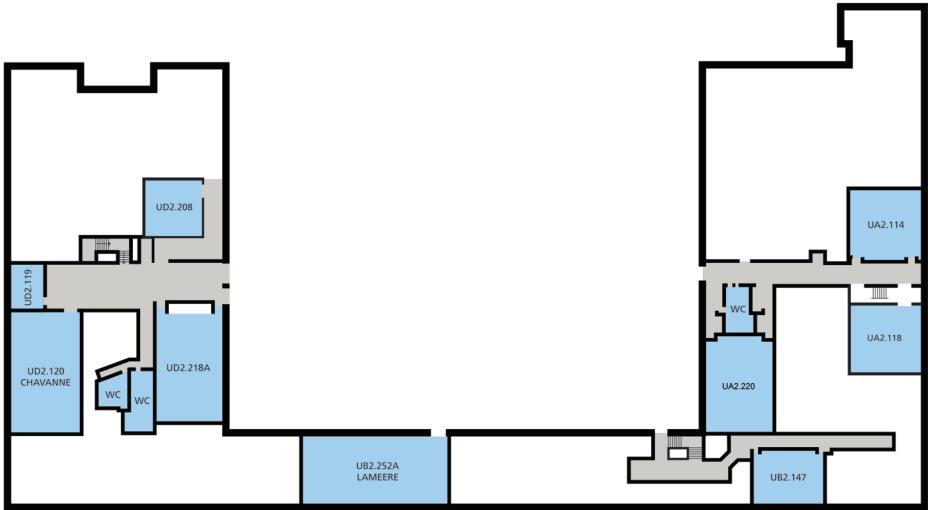
Stands		
Bareos	Mender.io openHAB	Turris
Grafana	OpenLDAP	WolfSSL

# BUILDING J



Main tracks: <b>Saturday</b>	Main tracks: <b>Sunday</b>
Communications	Miscellaneous
Hardware	Online privacy
Keynotes	Keynotes

# BUILDING U



Developer rooms: Saturday		Developer rooms: Sunday	
Project	Room	Project	Room
Legal	UA2.220	Containers	UA2.114
Open Document Editors	UA2.114	HPC, Big Data, and Data Science	UA2.118
Infra Management	UB2.252A	PostgreSQL	UA2.220
Tool the Docs / Collaborative information and content management applications	UD2.119	Monitoring & Observability	UB2.252A
Go	UD2.120	Free Tools and Editors	UD2.119
Mozilla	UD2.208	Python	UD2.120
Decentralized Internet & Privacy	UD2.218A	Rust	UD2.208
		Security	UD2.218A

The certification exams take place in room UB4.132, on the fourth floor of the U building. Follow the signs to UB2.147, where you will find arrows guiding you to the correct room.

The Quantum Computing Workshop takes place in room UB2.147 on Sunday.



# CORNERSTONE SPONSORS



**Google's** innovative search technologies connect millions of people around the world with information every day. Founded in 1998 by Stanford Ph.D. students Larry Page and Sergey Brin, Google today is a top web property in all major global markets. Google's targeted advertising program, which is the largest and fastest growing in the industry, provides businesses of all sizes with measurable results, while enhancing the overall web experience for users. Google is headquartered in Silicon Valley with offices throughout North America, Europe, and Asia.

⚙ Google supports the event financially.

⚙ Learn more at [www.google.com](http://www.google.com)



**redhat**®

**Red Hat** is the world's leading provider of open source software solutions, using a community-powered approach to reliable and high-performing cloud, Linux, middleware, storage and virtualization technologies. Red Hat also offers award-winning support, training, and consulting services. As the connective hub in a global network of enterprises, partners, and open source communities, Red Hat helps create relevant, innovative technologies that liberate resources for growth and prepare customers for the future of IT.

⚙ Red Hat supports the event financially.

⚙ Learn more at [www.redhat.com](http://www.redhat.com)

## MAIN SPONSORS



For over 12 years, Amazon Web Services has been the world's most comprehensive and broadly adopted cloud platform. AWS offers over 125 fully featured services for compute, storage, databases, networking, analytics, robotics, machine learning and artificial intelligence (AI), Internet of Things (IoT), mobile, security, hybrid, virtual and augmented reality (VR and AR), media, and application development, deployment, and management from 60 Availability Zones (AZs) within 20 geographic regions, spanning the U.S., Australia, Brazil, Canada, China, France, Germany, India, Ireland, Japan, Korea, Singapore, Sweden, and the UK. AWS services are trusted by millions of active customers around the world - including the fastest-growing startups, largest enterprises, and leading government agencies—to power their infrastructure, make them more agile, and lower costs. To learn more about AWS, visit <https://aws.amazon.com>.

- ⚙ AWS supports the event financially.
- ⚙ Learn more at [aws.amazon.com](https://aws.amazon.com)



**Arm** technology is at the heart of a computing and connectivity revolution that is transforming the way people live and businesses operate. Our advanced, energy-efficient processor designs have enabled intelligent computing in more than 125 billion chips. Over 70% of the world's population are using Arm technology, which is securely powering products from the sensor to the smartphone to the supercomputer. This technology combined with our IoT software and device management platform enables customers to derive real business value from their connected devices. Together with our 1,000+ technology partners we are at the forefront of designing, securing and managing all areas of compute from the chip to the cloud.

- ⚙ Arm supports the event financially.
- ⚙ Learn more at [www.arm.com](http://www.arm.com)



Founded in 2014, Back Market is the number one European marketplace (soon to be worldwide!) exclusively dedicated to give electronic products a second life. Our mission is simple: build a consumer alternative to the purchase of new electrical and electronic devices. And work against planned obsolescence and the exponential production of electronic waste. As a growing tech company, most of our product relies on open source technologies and tools (Django, Vue.js, Go and many more).

For us, promoting and contributing back to an open source community is one step closer to our ideal of society.

⚙ Back Market supports the event financially.

⚙ Learn more at [www.backmarket.com](http://www.backmarket.com)



**Canonical** is the company behind Ubuntu, the leading OS for cloud operations. Most public cloud workloads use Ubuntu, as do most new smart gateways, switches, self-driving cars and advanced robots. Canonical provides enterprise support and services for commercial users of Ubuntu. Established in 2004, Canonical is a privately held company.

⚙ Canonical supports the event financially.

⚙ Learn more at [www.canonical.com](http://www.canonical.com)



**Cisco** enables people to make powerful connections - whether in business, education, philanthropy, or creativity.

Cisco hardware, software, and service offerings are used to create the Internet solutions that make networks possible - providing easy access to information anywhere, at any time. Cisco was founded in 1984

by a small group of computer scientists from Stanford University. Since the company's inception, Cisco engineers have been leaders in the development of Internet Protocol (IP)-based networking technologies. Today, with more than 67,000 employees worldwide, this tradition of innovation continues with industry-leading products and solutions in the company's core development areas of routing and switching, as well as in advanced technologies such as Application Networking, Data Center, Digital Media, IPICS, Mobility, Security, Storage Networking, TelePresence, Unified Communications, Video and Virtualization.

⚙ Cisco provides all of our WLAN hardware and helps us setting up the wireless network.

⚙ Learn more at [www.cisco.com](http://www.cisco.com)



**CLOUD NATIVE  
COMPUTING  
FOUNDATION**

**The Cloud Native Computing Foundation (CNCF)** is an open source software foundation dedicated to making cloud native computing universal and sustainable. Cloud native computing uses an open source software stack to deploy applications as microservices, packaging each part into its own container, and dynamically orchestrating those containers to optimize resource utilization. We host and nurture components of cloud native software stacks, including Kubernetes, Envoy and Prometheus.

- ⚙ The Cloud Native Computing Foundation (CNCF) supports the event financially.
- ⚙ Learn more at [www.cncf.io](http://www.cncf.io).



**Codethink** specialises in system-level software engineering to enable advanced technical applications, working across a range of industries including finance, automotive, telecoms and medical. As experts in Free and Open Source Software, they help customers take maximum advantage of the knowledge and technologies developed by the Open Source community. Their customers are international-scale organizations who seek competitive edge through design of enterprise appliances and embedded systems which are faster, smaller, more secure, more up-to-date, or more advanced than their competitors.

- ⚙ Codethink supports the event financially.
- ⚙ Learn more at [www.codethink.co.uk](http://www.codethink.co.uk)

## colt

**Colt** provides network, voice, and data centre services to thousands of businesses around the world, allowing them to focus on delivering their business goals instead of the underlying infrastructure. Customers include 18 of the top 25 banks and diversified

financial groups and 19 out of the top 25 companies in both global media and telecoms industries (Forbes 2000 list, 2014). In addition, Colt works with over 50 exchange venues and 13 European central banks. Colt operates across Europe, Asia and North America with connections into over 200 cities globally. It completed the acquisition of KVH in 2014, an integrated managed communications and IT infrastructure services business, with headquarters in Tokyo and operations in Hong Kong, Seoul and Singapore.

- ⚙ Colt sponsors the internet uplink at FOSDEM.
- ⚙ Learn more at [www.colt.net](http://www.colt.net)

## GitHub

GitHub is how people build software. Millions of individuals and organizations around the world use GitHub to discover, share, and collaborate on software—from games and experiments to popular frameworks and leading applications. Together, we're defining how software is built today. Whether you use GitHub.com or GitHub Enterprise on your own servers, you can access one of the world's largest developer communities to build software in the way that works best for you. Choose your deployment option and integrate your favorite third party tools into a powerful, collaborative workflow.

- ⚙ GitHub supports the event financially.
- ⚙ Learn more at [github.com](http://github.com)

The O'Reilly logo consists of the word "O'REILLY" in white, uppercase, sans-serif font, set against a solid red rectangular background.

Once again, we are proud to have **O'Reilly** as one of our sponsors. O'Reilly are the premier information source for leading-edge computer technologies and communicate the knowledge of experts through books, conferences, and web sites. Their books, sporting the iconic animals on the covers, occupy a treasured place on the shelves of the developers building the next generation of software. Their conferences and summits bring innovators together to shape the revolutionary ideas that spark new industries. From the Internet to the web, Linux, Open Source, and now peer-to-peer networking, O'Reilly puts technologies on the map.

- ⚙ O'Reilly supports the event financially.
- ⚙ Learn more at [www.oreilly.com](http://www.oreilly.com)

The trivago logo features the word "trivago" in a lowercase, rounded, sans-serif font. The "tri" is blue, "vago" is orange, and a registered trademark symbol (®) is at the end.

**trivago** is a global hotel search platform. We are focused on reshaping the way travelers search for and compare hotels, while enabling hotel advertisers to grow their businesses. Our search platform makes sense of a complex, fragmented web of online hotel offerings in a comprehensive way, by aggregating information from a deep supply of hotels and websites.

trivago provides access to over 1.8m hotels, including vacation rentals and alternative accommodations, with prices and availability from over 400+ booking sites and hotel chains. trivago is a place where we take pride in learning from one another. We love what we do but we don't take ourselves too seriously— we make mistakes, but the drive to continually improve is something we all possess. We are big supporters of Open Source and contribute back whenever possible.

- ⚙ trivago supports the event financially.
- ⚙ Curious? Visit our tech blog! [tech.trivago.com](http://tech.trivago.com)



**The Université Libre de Bruxelles** (or ULB) is a French-speaking university in Brussels, Belgium. It has about 20,000 students.

- ⚙ The ULB very substantially supports the event by providing us with the location as well as infrastructure on-site.
- ⚙ Learn more at [www.ulb.ac.be](http://www.ulb.ac.be)

# A SPECIAL THANKS TO ...!

## **Cercle Informatique, ULB**

The “Cercle Informatique ULB” is a group of students who help us book ULB rooms for use during FOSDEM. They also provide part of the catering during the event, the proceeds of which go towards funding their own academic activities.

The **FOSDEM Team** spends a lot of free time throughout the year organising this great event. Without them there would be no FOSDEM.

# HELP US MAKE FOSDEM BETTER

Tear off this page and drop it in the feedback box at the Infodesk on your way out. Alternatively, send email to [feedback@fosdem.org](mailto:feedback@fosdem.org) if you prefer to keep your booklet intact.

You can also give feedback on any individual talk by following the link near the bottom of its page in the online schedule at [fosdem.org/schedule/](https://fosdem.org/schedule/)

**Supermarket**  
Saturday 08:00-20:00  
Sunday 08:00-20:00

**ATM**

**Bank  
+ATM**

CHAUSSÉE DE BOONDAEL

**Supermarket**  
Saturday 08:00-20:00

**Bakery**

**Pharmacy**  
Saturday 09:00-17:00

AV. DE L'UNIVERSITÉ

**Supermarket**  
Saturday 08:00-20:00  
Sunday 08:00-13:00

**Spirits, wine and tobacco**  
Saturday 10:00-18:00

**Chicken fast food**  
Saturday & Sunday

AV. GÉNÉRAL MÉDECIN DERACHE

**Print shop**  
Saturday 10:00-18:00

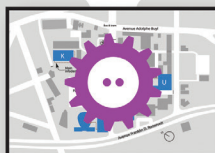
AV. DE L'UNIVERSITÉ

**Tobacco**  
Saturday 08:00-18:00

**Pharmacy**  
Saturday 09:30-13:00

AV. ARMAND HUYSMANS

FOSDEM



100 metres

● Food

AV. FRANKLIN D. ROOSEVELT



A detailed map of the exhibition area. The map shows several rooms labeled with letters: J (a large blue room with a white circle), H (a large blue room), F1 (a blue room), K (a blue room with a white cross), U (two blue rooms, one with a white circle), and AW (a blue room). A central white area is labeled 'CAR PARK'. A path leads from the car park to a 'MAIN INFODESK' (a white building with a white cross). The map also shows 'AV. PAUL HEGER' and 'AVENUE ADOLPHE BUYL'. A legend indicates 'SHOPS, FOOD, ETC...' with a white circle icon. A compass rose shows North (N) pointing towards the top right. A scale bar indicates 'CITY CENTRE (~5 km)'.

AVENUE FRANKLIN ROOSEVELT

TO CAR PARK

CAR PARK

## MAIN INFODESK

AV. PAUL HEGER

AVENUE PAUL HEGER

AVENUE ADOLPHE BUYL

### ▲ SHOPS, FOOD, ETC....

